

TECHNICAL DATA REACHSTACKERS 42 – 45 TONNES**Kalmar DRT450****Lifting data****DRT450**

Lifting capacity at load centre L4, rated – at max. lifting height (kg)	45000 – 42000
Lifting capacity at load centre L5, rated – at max. lifting height (kg)	31000 – 31000
Lifting speed, unloaded – at 70% of rated load (m/s)	0,42 – 0,25
Lowering speed, unloaded – at rated load (m/s)	0,36 – 0,36

Driving data

Travelling speed forward, unloaded – at rated load (km/h)	25 – 21
Travelling speed backward, unloaded – at rated load (km/h)	25 – 21
Gradeability at 2 km/h, unloaded – at rated load (%)	38 – 22
Max. gradeability, unloaded – at rated load (%)	40 – 28
Drawbar pull, max (kN)	317
Stability according to EN 1459	

Weight of truck

Service weight (kg)	69500
Axle load front at load centre L4, unloaded – at rated load (kg)	34700 – 99900
Axle load front at load centre L5, unloaded – at rated load (kg)	38900 – 93000
Axle load front at driving position according to EN 1459 and rated load (kg)	88500
Axle load rear at load centre L4, unloaded – at rated load (kg)	34800 – 14600
Axle load rear at load centre L5, unloaded – at rated load (kg)	30600 – 7500
Axle load rear at driving position according to EN 1459 and rated load (kg)	26000

Engine

Manufacturer – type designation	Cummins QSM11
Fuel – type of engine	Diesel – 4 stroke
Number of cylinders – compression (cm ³)	6 – 16.3:1
Power according to ISO 3046 – at revs (kW/rpm)	224 – 2000
Torque according to ISO 3046 – at revs (Nm/rpm)	1575 – 1400
Alternator, type – power (W)	AC – 2400
Starting battery, voltage – capacity (V – Ah)	2×12 – 140
Fuel consumption, normal driving (l/h)	18

Transmission

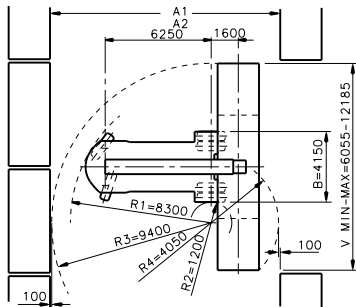
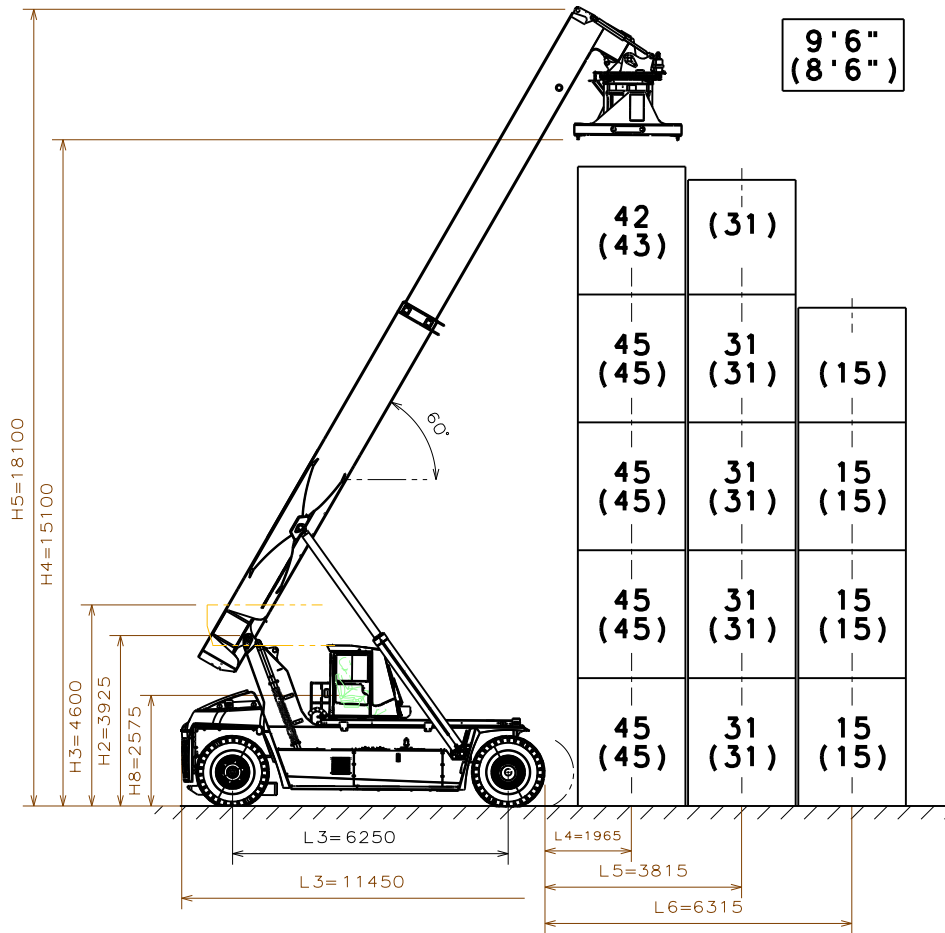
Manufacturer – type designation	Dana – 15.5HR36000
Clutch, type	Torque converter
Gearbox, type	Powershift
Number of gears, forward – reverse	4 – 4
Driving axle, type	Differential and hub reduction

Wheels

Type	Pneumatic
Dimension, front – rear (inch)	18.00×25 – 18.00×25, PR40 E4
Number of wheels, front – rear (*driven)	4* – 2
Pressure (MPa)	1,0

Miscellaneous

Steering system, type – maneuvering	Servo assisted – Steering wheel
Service brake system, type – affected wheels	Wet disc brakes – Drive wheel
Parking brake system, type – affected wheels	Spring brake – Drive wheel
Max. hydraulic pressure (MPa)	21,0
Noise level according to TW 12053, cabin (db(A))	–
Noise level according to 2000/14/EC, outside (db(A))	–
Fuel volume (l)	550
Hydraulic oil volume (l)	600
Overload protection	Electronic



Dimensions

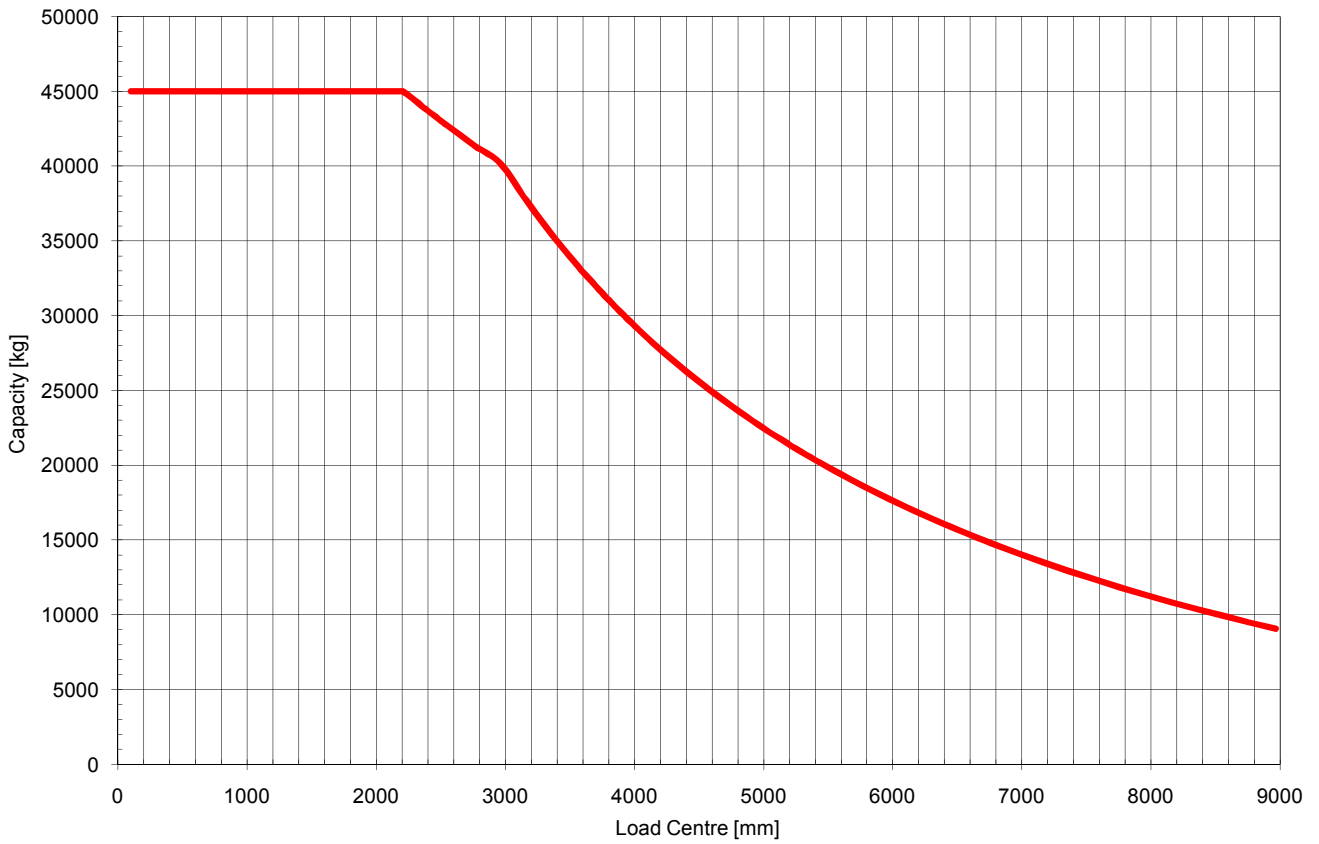
		DRT450
Beam angle, max (°)	α	60
Attachment rotation, CW – CCW (°)	β	195 – 105
Min. aisle width for 90° stacking with 20' containers (mm)	A1	11400
Min. aisle width for 90° stacking with 40' containers (mm)	A2	13600
Sideshift \pm (mm)	V1	± 800
Track (c-c), front – rear (mm)	S	3030 – 2600
Ground clearance, min. (mm)		250

The design and materials specification are subject to alternation without prior notice.
Tolerances according to K-standard 95430.0008/0009

Cargotec improves the efficiency of cargo flows on land and at sea – wherever cargo is on the move. Cargotec's daughter brands Hiab, Kalmar and MacGregor are recognised leaders in cargo and load handling solutions around the world. Cargotec's global network is positioned close to customers and offers extensive services that ensure the continuous, reliable and sustainable performance of equipment. Cargotec's class B shares are quoted on the NASDAQ OMX Helsinki. www.cargotec.com



DRT450



Cargotec improves the efficiency of cargo flows on land and at sea – wherever cargo is on the move. Cargotec’s daughter brands Hiab, Kalmar and MacGregor are recognised leaders in cargo and load handling solutions around the world. Cargotec’s global network is positioned close to customers and offers extensive services that ensure the continuous, reliable and sustainable performance of equipment. Cargotec’s class B shares are quoted on the NASDAQ OMX Helsinki. www.cargotec.com

