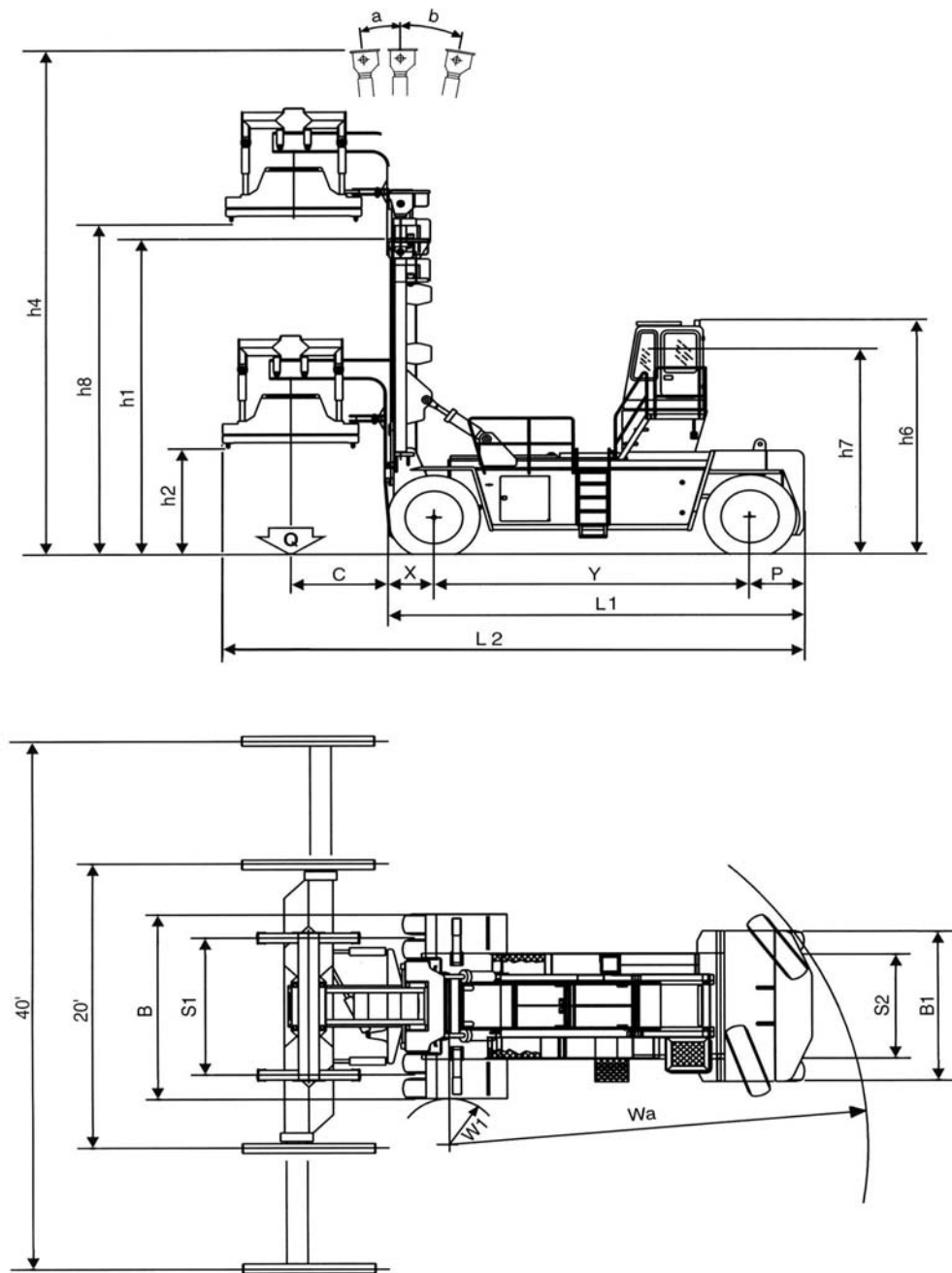




FDC 450 G4

TECHNICAL SPECIFICATIONS

				Metric		Imperial	
1	Capacity	Q	Rated Capacity	Kg	38000	lbs	83600
2	Load Centre	C	Distance	mm	1700 ± 120	In	67 ± 5
3	Dimensions	h2 / h8	Lift height under Twist-locks (Min. / Max.)	mm	2300 / 12100	In	91 / 476
4		a / b	Mast tilting (Forward / Reverse)	°	3 / 10		
5		y	Wheel base	mm	5750	In	226
6		S1 / S2	Wheel center F/R	mm	3070 / 2580	In	121 / 102
7		m1	Ground clearance lowest point (loaded)	mm	350	In	14
8		m2	Ground clearance mid track (loaded)	mm	550	In	22
9		L1	Length of truck (w/out attachment)	mm	7600	In	299
10		L2	Length of truck (with attachment)	mm	10520	In	414
11		B / B1	Overall Width (Front / Rear)	mm	4200 / 3100	In	165 / 122
12		h1	Closed Mast Height	mm	7800	In	307
13		h4	Open Mast Height	mm	12650	In	498
14		h6	Cabin Height	mm	4100	In	161
15		h7	Seat Height	mm	3000	In	118
16		P	Rear Overhang	mm	950	In	37
17	W1 / Wa	Turning radius (Inside / Outside)	mm	950 / 7750	In	37 / 305	
18	x	Distance from C/L of front axle to Face of Machine	mm	900	In	35	
19	Spreader		Type	CYLINDER SUSPENDED SPREADER			
20			Main features	TELESCOPIC 20/40'; SIDESHIFT (Each direction) 300 mm - 12" HYDRAULIC REACH +/- 120 mm - +/- 5"; HYDRAULIC SLEW +/- 5°; HYDRAULIC PILE SLOPE +/- 3.			
21	Speeds		Travel With / Without Load	Km/h	25 / 26	mph	15.6 / 16.3
22			Lift With / Without Load	m/s	0.25 / 0.30	ft/min	50.0 / 60.0
23			Lowering With / Without Load	m/s	0.30 / 0.25	ft/min	60.0 / 50.0
24	Tires		V = Solid - L = Pneum	F / R	L / L		
25			Size Front		(4) 18.00 x 25 - 40 PR		
26			Size Rear		(2) 18.00 x 25 - 40 PR		
27			Inflation Pressure	bar	10	psi	145
28		Ground pressure	kg/cm ²	9	psi	131	
29	Max. Drawbar pull		Loaded	daN	28000	lbf	61600
30	Max. Gradient		Loaded	%	25		
31	Total Weight		Unloaded	Kg	64000	lbs	140800
32	Weight on axle	F / R	Loaded	Kg	92500 / 9500	lbs	203500 / 20900
33		F / R	Unloaded	Kg	39000 / 25000	lbs	85800 / 55000
34	Brakes	Front	Pedal servohydraulic	Wet disc brakes			
35		Rear		Dry disc brakes			
36		Parking	Mechanical	Disc			
37	Engine		Type	Diesel			
38			Manufacturer / Type	CUMMINS M11 C-330			
39			Continuous power	Kw/CV	246 / 330		
40			Revolutions per minute	rpm	2100		
41			Number of Cylinders / Displacement	cm ³	6 / 10800	In. ³	6 / 661
42			Specific fuel consumption	g/Kwh	207	lb/BHP h	0.339
43			Effective fuel consumption	l/h	20	gals/h	5.28
44	Alternative engine		Brand	CATERPILLAR / VOLVO			
45	Batteries		Voltage / Capacity	V / Ah	24 / 140		
46	Steering		Hydraulic - Servo assisted	Oscillating single equalizer cylinder rear steer axle			
47	Drive axle		Brand	KESSLER Model D102 PL340			
48			Type	With planetary reducer hub and removable half-shaft			
49	Transmission		Brand	CLARK 36415			
50			Type	HYDRODYNAMIC WITH TORQUE CONVERTER			
51	Clutch		Type	POWER-SHIFT			
52	Gear speeds		Forward / Reverse	N°	4 / 4		
53	Hydraulic Pressure		Working	bar	180	psi	2611
54	Fluid Capacities		Hydraulic oil	Liter	807	gals	213
55			Fuel	Liter	605	gals	160
56	Noise level		Outside Cabin / Inside Cabin	db (A)	85 / 75		
57	Stability Factor		Static	1.57			
58	Controls		Sevoassisted (Type)	Multifunction Joystick			
59	Cabin configuration			Rear high mounted panoramic cabin			



MAIN DIMENSIONS

			Metric		Imperial	
Q	Rated Capacity	Kg	38000		lbs	83600
C	Distance from Face of Machine to Load Center	mm	1700	± 120	In	67 ± 5
x	Distance from C/L of Front Axle to Face of Machine	mm	900		In	35
y	Wheel base	mm	5750		In	226
P	Rear Overhang	mm	950		In	37
L1	Length of truck (w/out attachment)	mm	7600		In	299
L2	Length of truck (with attachment)	mm	10520		In	414
h2 / h8	Lift Height under Twist-locks (Min. / Max.)	mm	2300	/ 12100	In	91 / 476
h1	Closed Mast Height	mm	7800		In	307
h4	Open Mast Height	mm	12650		In	498
h6	Cabin Height	mm	4100		In	161
h7	Seat Height	mm	3000		In	118
m1	Ground clearance lowest point (loaded)	mm	350		In	14
m2	Ground clearance mid track (loaded)	mm	550		In	22
a / b	Mast tilting (Forward / Reverse)	°	3 / 10			
B / B1	Overall Width (Front / Rear)	mm	4200	/ 3100	In	165 / 122
S1 / S2	Wheel center F/R	mm	3070	/ 2580	In	121 / 102
W1 / Wa	Turning radius (Inside / Outside)	mm	950	/ 7750	In	37 / 305